



MONTHLY MEMBERSHIP PROGRESS REPORT

District 323A2

Results as of: 5/31/2015

GMT: KAMLESH JAIN

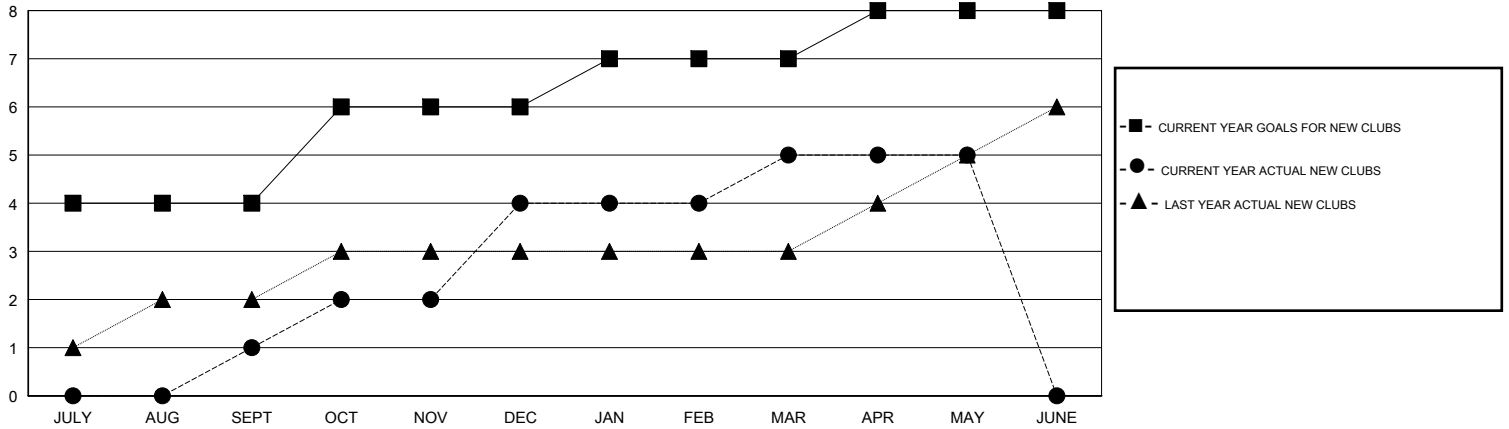
LOCATION INDIA

GMT CA 6

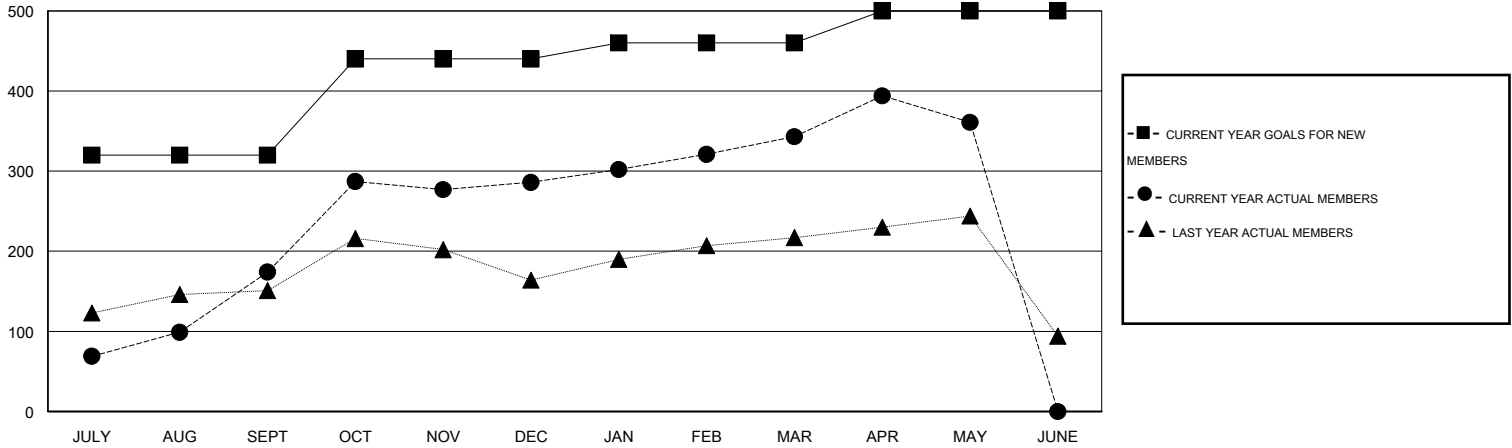
Clubs				
RESULTS FOR 2014-2015				
QUARTER	NEW CLUB GOAL	NEW CLUBS	DROPPED CLUBS	NET GAIN/LOSS
JULY/AUG/SEPT	4	1	0	1
OCT/NOV/DEC	2	3	1	2
JAN/FEB/MAR	1	1	0	1
APR/MAY/JUNE	1	0	1	-1

Members				
RESULTS FOR 2014-2015				
QUARTER	NEW MEMBER GOAL	CHARTER AND NEW MEMBERS ADDED	DROPPED MEMBERS	NET GAIN/LOSS
JULY/AUG/SEPT	320	266	92	174
OCT/NOV/DEC	120	208	96	112
JAN/FEB/MAR	20	89	32	57
APR/MAY/JUNE	40	66	48	18

GOALS AND ACTUAL NEW CLUBS CUMULATIVE



GOALS AND ACTUAL MEMBERS CUMULATIVE



DROPPED CLUBS: 2

69 CLUBS OF 83 ADDED 1 OR MORE NEW MEMBERS

GENDER DISTRIBUTION	
MALE	2,368 (73.00%)
FEMALE	876 (27.00%)

DROPPED MEMBERS	
DECEASED	6
CLUB CANCELLED	0
OTHER	262
TOTAL	268

[CLICK HERE FOR HEALTH ASSESSMENT DATA](#)

FAMILY UNIT MEMBERS	1,191
HEAD OF HOUSEHOLD	572
NON-HEAD OF HOUSEHOLD	619